

1A Old Haymarket 73-89 Victoria Street, Liverpool, L1 6AF
Tel: 0151 305 2577
Email: liverpoolsales@ascendproperties.com
www.ascendproperties.com

Ascend

Built on higher standards



Park Lane Plaza, 2 Jamaica Street, Liverpool, L18HG

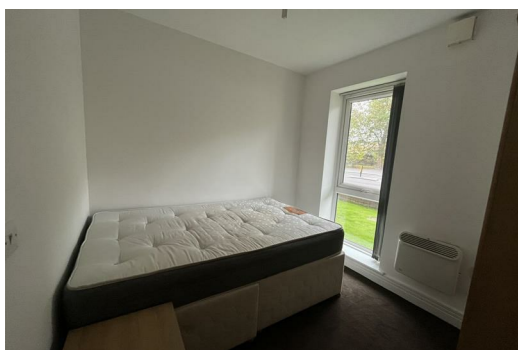
£850 PCM

This fantastic two bedroom apartment is situated in an ultra-stylish, peaceful development which rests just a stone's throw away from all the action of the city centre - the perfect destination for students and working professionals.

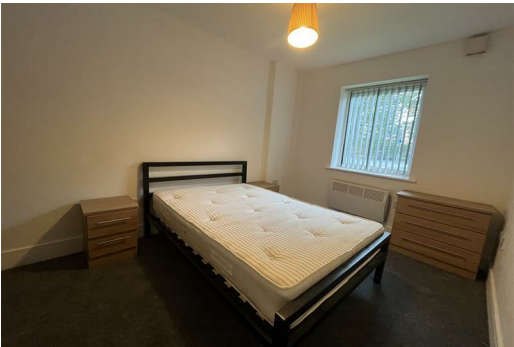
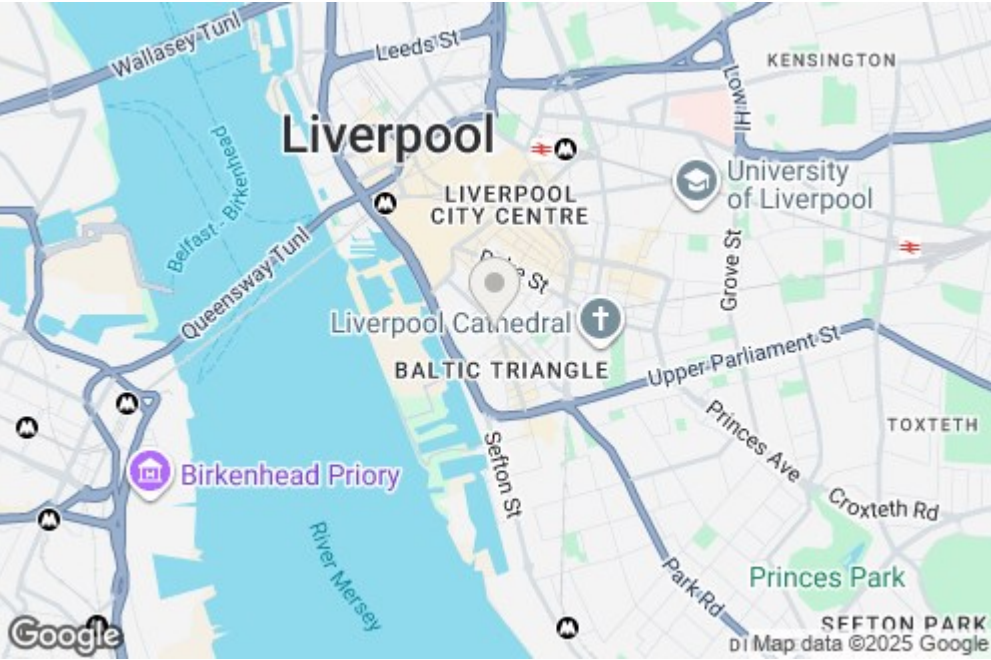
This fab property features a bright, open-plan lounge and a kitchen that benefits from tonnes of space - a rarity in city centre apartments. The kitchen has been decked out in a super-slick black and white design and comes complete with an integrated hob - very swish. With two sleek bathrooms and great sized bedrooms to match, this fully furnished property is ready to move into straight away. As an added bonus, your lounge opens up onto a private balcony - where you can experience cracking views of Liverpool first-hand.

The location is pretty top-notch too. A 5 minute walk will get you to Wapping Dock, with Liverpool One just a few minutes further - perfect for working professionals. If you take a quick stroll around your development you'll also find a great range of cafes and restaurants, as well as a chic bakery, brewery and the Lantern Theatre. If you fancy journeying further, there's a bus stop practically on your doorstep and Liverpool Central train station is just a hop, skip and a jump away.

If you're interested in having a closer look, or have any questions, do get in touch.



8 Park Lane Plaza 2 Jamaica Street, Liverpool, Merseyside, L1 8HG



Energy Efficiency Rating		Environmental Impact (CO ₂) Rating	
Score	Band	Score	Band
64	B	75	B
65	B	76	B
66	B	77	B
67	B	78	B
68	B	79	B
69	B	80	B
70	B	81	B
71	B	82	B
72	B	83	B
73	B	84	B
74	B	85	B
75	B	86	B
76	B	87	B
77	B	88	B
78	B	89	B
79	B	90	B
80	B	91	B
81	B	92	B
82	B	93	B
83	B	94	B
84	B	95	B
85	B	96	B
86	B	97	B
87	B	98	B
88	B	99	B
89	B	100	B